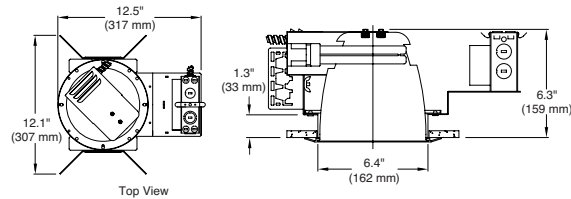


6" HORIZONTAL LAMP FLUORESCENT ARCHITECTURAL NEW CONSTRUCTION - TYPE NON-IC (E-A6HN SERIES)

Applications: For use in new construction applications and non-insulated ceilings or where insulation can be kept 3" from housing.



Catalog #	Ceiling Cut-Out	Plaster Frame	Lamp (Ordered Separately)	Lamp Base	Ballast	Minimum Starting Temp.
E-A6HN27-UT	6-1/2	12.1" W X 12.5" L	(2)13W Double Twin tube CFL	4-Pin G24q-1	Universal 120-277V 50/60Hz voltage, lightweight, energy efficient electronic ballast with End of Life protection	0°F (-18°C)
E-A6HN36-UT	6-1/2	12.1" W X 12.5" L	(2) 18W Double Twin tube CFL	4-Pin G24q-2	Universal 120-277V 50/60Hz voltage, lightweight, energy efficient electronic ballast with End of Life protection	0°F (-18°C)
E-A6HN52-UT	6-1/2"	12.1" W X 12.5" L	(2) 26W Double Twin tube CFL	4-Pin G24q-3	Universal 120-277V 50/60Hz voltage, lightweight, energy efficient electronic ballast with End of Life protection	0°F (-18°C)

Construction & Materials

- Heavy-gauge formed steel housing
- 1-1/4" deep aperture throat, to accommodate all standard ceilings
- Mounting brackets are adjustable from above or below the ceiling and have a 5" vertical adjustment
- Use 1/2" EMT conduit, C-channel mounting bars, flat bar hangers
- Listed for eight #12AWG (four in, four out) 90°C feed through branch circuit conductors
- Ten 1/2" and four 3/4" knockouts with pry-outs
- Oversize, through branch circuit rated, junction box
- Eight knockouts with Romex cable clamp
- Snap-on junction box access cover plates
- THD less than 10%
- Precisely formed non-imaging one-piece reflector design
- Reflectors are spun aluminum with anodized clear Soft-Vue™ finish
- Above or below the ceiling re-lamping

Performance

- 2-year limited warranty

Electrical

- Minimum .98 power factor

Regulatory

- UL, cUL listed for use in damp locations
- UL, cUL listed for installations where insulation can be kept 3" away
- Thermally protected in accordance with Article 410 of NEC and UL 1598
- Meets FCC Title 47 CFR Part 18, Non-Consumer EMI and RFI emission levels

Accessories

• E-RABH30C - 30-inch C-Channel Hanger Bars

• E-RABH27 - 27-inch Flat Bar Hangers

• E-RARC7 - T- Bar Clips (4)



Open, Soft-Vue™ Clear

- (2) 26/18/13W Double Twin Tube CFL
- White Molded Trim Ring
- O.D. 7-15/16"
- CAT.# E-AT61300CL



Grooved Baffle, White Metal

- (2) 26/18/13W Double Twin Tube CFL
- White Molded Trim Ring
- O.D. 7-15/16"
- CAT.# E-AT62300WH



Wall Wash, Soft-Vue™ Clear

- (2) 26/18/13W Double Twin Tube CFL
- White Molded Trim Ring
- O.D. 7-15/16"
- CAT.# E-AT63300CL



Grooved Baffle, Black Metal

- (2) 26/18/13W Double Twin Tube CFL
- White Molded Trim Ring
- O.D. 7-15/16"
- CAT.# E-AT62300BK



Due to continuous product improvement, information in this document is subject to change. All published photometric testing performed to IESNA LM-79-08 standards by a NVLAP certified laboratory. Fixture photometry was completed on a single representative fixture. Actual production units may vary up to ±10% of initial delivered lumens. Lumen maintenance values at 25°C (77°F) are calculated per TM-21 based on LM-80 data and in-situ fixture testing.

1501 96th Street, Sturtevant, WI 53177 | Phone (888)243-9445 | Fax (262)504-5409 | www.e-conolight.com

6" HORIZONTAL LAMP FLUORESCENT ARCHITECTURAL NEW CONSTRUCTION - TYPE NON-IC (E-A6HN SERIES)

OPEN DOWNLIGHT TECHNICAL DATA

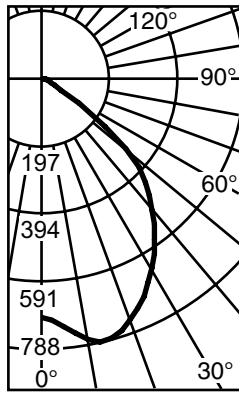
E-A6HN52-UT/E-AT61300CL

Lamp: Two Sylvania 26 Watt DTT CFL Lamps

Efficiency: 40.6% S/M: 1.3

Test No.: LSI T23172T.IES

Candela Distribution



degrees	cd
0°	696
5°	728
10°	773
15°	785
20°	750
25°	701
30°	641
35°	574
40°	499
45°	429
50°	319
55°	131
60°	42
65°	22
70°	13
75°	8
80°	4
85°	2
90°	0

Luminance Data

VERTICAL ANGLE	AVERAGE
45°	33213
55°	12461
65°	2851
75°	1587
85°	1320

Cone of Light

distance from workplane	footcandles	beam diameter
6'	20.5	7.6'
8'	11.5	10.1'
10'	7.4	12.6'
12'	5.1	15.2'
14'	3.8	17.6'

Coefficient of Utilization

FLOOR	20													
	80		70		50		30		0					
RC	70	50	30	10	70	50	30	10	50	10	0			
RW	.0	.48	.48	.48	.48	.47	.47	.47	.47	.45	.45	.43	.43	.41
RCR	.1	.46	.44	.43	.42	.44	.43	.42	.41	.42	.40	.40	.39	.37
	.2	.42	.40	.38	.36	.42	.39	.37	.36	.38	.35	.37	.34	.33
	.3	.40	.36	.34	.32	.39	.36	.33	.31	.35	.31	.33	.30	.29
	.4	.37	.33	.30	.28	.36	.32	.30	.28	.31	.27	.31	.27	.26
	.5	.34	.30	.27	.25	.34	.30	.27	.25	.29	.24	.28	.24	.23
	.6	.32	.27	.24	.22	.31	.27	.24	.22	.26	.22	.26	.22	.21
	.7	.30	.25	.22	.20	.29	.25	.22	.20	.24	.20	.24	.20	.19
	.8	.28	.23	.20	.18	.27	.23	.20	.18	.22	.18	.22	.18	.17
	.9	.26	.21	.18	.16	.26	.21	.18	.16	.21	.16	.20	.16	.16
	.10	.25	.20	.17	.15	.24	.20	.17	.15	.19	.15	.19	.15	.14

Baffle Trim Multipliers: White Baffle .84 Black Baffle .76

WALL WASH TECHNICAL DATA

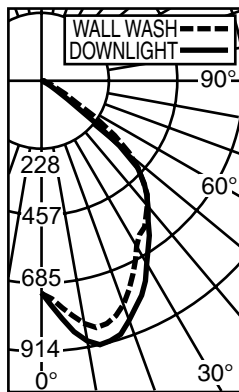
E-A6HN52-UT/E-AT63300CL

Lamp: Two Sylvania 26 Watt DTT CFL Lamps

Efficiency: 44.1%

Test No.: LSI T23173T.IES

Candela Distribution



degrees	Wall Wash	Downlight
0°	717	717
5°	662	743
10°	619	765
15°	566	757
20°	518	745
25°	490	737
30°	429	701
35°	395	637
40°	365	539
45°	340	461
50°	307	332
55°	322	122
60°	287	41
65°	135	18
70°	51	9
75°	17	5
80°	5	5
85°	0	10
90°	0	0

Luminance Data

VERTICAL ANGLE	WALL WASH	DOWNLIGHT
45°	26335	39037
55°	30785	14151
65°	17443	1840
75°	3597	677
85°	0	628

Coefficient of Utilization

FLOOR	20													
	80		70		50		30		0					
RC	70	50	30	10	70	50	30	10	50	10	0			
RW	0	.53	.53	.53	.53	.51	.51	.51	.51	.49	.49	.47	.47	.44
RCR	.1	.49	.48	.46	.45	.48	.47	.46	.44	.45	.43	.43	.42	.40
	.2	.46	.43	.41	.39	.45	.42	.40	.38	.41	.38	.39	.37	.35
	.3	.43	.39	.36	.34	.42	.38	.36	.33	.37	.33	.36	.32	.31
	.4	.40	.35	.32	.30	.39	.35	.32	.29	.34	.29	.33	.29	.27
	.5	.37	.32	.29	.26	.36	.32	.28	.26	.31	.26	.30	.26	.24
	.6	.34	.29	.26	.23	.33	.29	.26	.23	.28	.23	.27	.23	.22
	.7	.32	.27	.23	.21	.31	.26	.23	.21	.26	.21	.25	.21	.20
	.8	.30	.25	.21	.19	.29	.24	.21	.19	.24	.19	.23	.19	.18
	.9	.28	.23	.19	.17	.27	.22	.19	.17	.22	.17	.21	.17	.16
	.10	.26	.21	.18	.16	.26	.21	.18	.16	.20	.16	.20	.16	.15

Wall Wash

From Ceiling	2' from Wall				3' from Wall				4' from Wall			
	2' Centers		3' Centers		3' Centers		4' Centers		4' Centers		5' Centers	
	CL	Mid	CL	Mid	CL	Mid	CL	Mid	CL	Mid	CL	Mid
1'	10	7	9	2	1	1	1	0	0	0	0	0
2'	45	59	36	39	21	17	20	8	5	3	5	2
3'	37	48	27	37	20	26	16	20	13	14	12	10
4'	27	33	20	26	17	23	14	19	11	14	10	12
5'	19	23	14	18	14	18	11	15	10	13	8	11
6'	14	16	10	13	11	14	9	12	9	11	7	10
7'	10	12	8	10	9	11	7	9	7	9	6	8
8'	8	9	6	8	7	9	6	8	6	8	5	7
9'	6	7	5	6	6	7	5	6	5	7	5	6
10'	5	5	4	5	5	6	4	5	5	6	4	5



Due to continuous product improvement, information in this document is subject to change. All published photometric testing performed to IESNA LM-79-08 standards by a NVLAP certified laboratory. Fixture photometry was completed on a single representative fixture. Actual production units may vary up to ±10% of initial delivered lumens. Lumen maintenance values at 25°C (77°F) are calculated per TM-21 based on LM-80 data and in-situ fixture testing.

1501 96th Street, Sturtevant, WI 53177 | Phone (888)243-9445 | Fax (262)504-5409 | www.e-conolight.com