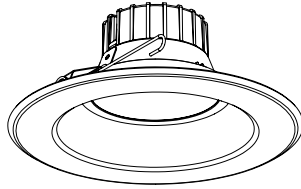


INSTALLATION INSTRUCTIONS

5" or 6" RECESSED LED DOWNLIGHT

E-T6C

Document:	LPN00317X0001A0_A	Date:	2015-11-11
Created By:	TMT	DCR#:	2015-369



E-T6C

CAUTIONS

IMPORTANT SAFEGUARDS

When using electrical equipment, basic safety precautions should always be followed including the following:

READ AND FOLLOW ALL SAFETY INSTRUCTIONS

1. **Risk of Fire or Electric Shock.** LED Retrofit Kit installation requires knowledge of luminaires electrical systems. If not qualified, do not attempt installation. Contact a qualified electrician.
2. **Risk of Fire or Electric Shock.** Supply conductors (power wiring) connecting the fixture must be rated minimum 90°C. If uncertain, consult an electrician.
3. **Risk of Electric Shock.** Disconnect power at fuse of circuit breaker before installing or servicing.
4. **Risk of Fire or Electric Shock.** Install this kit only in the luminaires that have the construction features and dimensions shown in the photographs and/or drawings.
5. **Risk of Fire or Electric Shock.** Do not make or alter any open holes in an enclosure of wiring or electrical components during kit installation.
6. **Risk of Fire or Electric Shock.** Do not alter, relocate, or remove wiring, lamp holders, power supply, or any other electrical component.
7. **Risk of Fire or Electric Shock.** To prevent wiring damage or abrasion, do not expose wiring to edges of sheet metal or other sharp objects.
8. This retrofit kit is accepted as a component of a luminaire where the suitability of the combination shall be determined by authorities having jurisdiction.

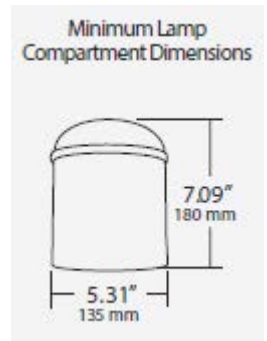
SAVE THESE INSTRUCTIONS FOR FUTURE REFERENCE

Caution: To avoid possible electric shock, be sure that power supply is turned off at fuse box or circuit breaker before attempting installation or servicing of the fixture. For safest operation read and become familiar with complete installation instructions prior to use.

Note: This luminaire has been modified and can no longer operate the originally intended lamp. The provided label must be applied to the retrofitted luminaire where visible during re-lamping.

COMPATIBLE HOUSINGS

Min. lamp compartment dimensions 135mm (dia) x 180 mm (height). The E-T6C Recessed LED Downlight has a built in trim and does not require any additional trim. Use in recessed housings with no open holes. This LED retrofit kit is intended for installing in the field in recessed IC and NON-IC type luminaires with dimensions outlined above and in the drawing to the right.



USE OF DIMMERS

The 5 and 6 inch luminaire can be dimmed with most standard dimmers. To ensure your dimmer is compatible, please consult the dimmer manufacturer and reference the most current E-T6C 5" & 6" Recessed LED Downlight specification data at our website: www.e-conolight.com.

INCLUDED COMPONENTS

- E-T6C retro-fit module
- Edison base lamp holder adaptor
- Retro-fit sticker
- Installation instructions

INSTALLATION INSTRUCTIONS

NOTE: E-T6C Recessed LED Downlight is designed to fit into 5" or 6" housings with torsion spring receiving brackets. For use in a 5" housing simply compress the torsion spring arms inward until torsion springs line-up with mounting brackets. Torsion arms serve as grounding connection. No tools are necessary for installation.

1. Disconnect Edison socket adapter base from downlight and screw into socket inside recessed housing. (GU24 base accessory available). See **Figure 1**.
2. Plug the downlight connector into the Edison (or GU24) base connector. See **Figure 2**.

FIGURE 1

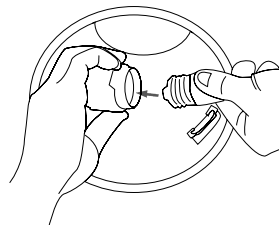
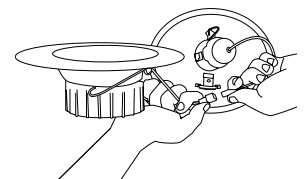


FIGURE 2



INSTALLATION INSTRUCTIONS

5" or 6" RECESSED LED DOWNLIGHT

E-T6C

Document:	LPN00317X0001A0_A	Date	2015-11-11
Created By:	TMT	DCR#	2015-369

3. Squeeze torsion springs together and install into torsion spring brackets inside recessed housing. See **Figure 3**.
4. Carefully route wires into housing and push the downlight up. Remove protective cover and push flush to ceiling surface. See **Figure 4**.

FIGURE 3

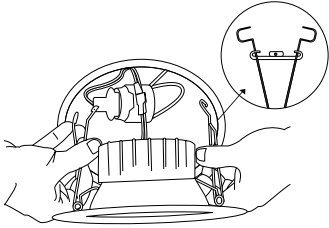
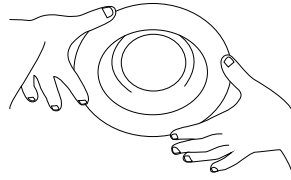


FIGURE 4



FCC NOTICE

CAUTION: Changes or modifications not expressly approved could void your authority to use this equipment.

This equipment has been tested and found to comply with the limits for a Class B digital device, pursuant to part 15 of the FCC Rules. These limits are designed to provide reasonable protection against harmful interference in a residential installation. This equipment generates, uses and can radiate radio frequency energy and, if not installed and used in accordance with the instructions, may cause harmful interference to radio communications. However, there is no guarantee that interference will not occur in a particular installation. If this equipment does cause harmful interference to radio or television reception, which can be determined by turning the equipment off and on, the user is encouraged to try to correct the interference by one or more of the following measures:

- Reorient or relocate the receiving antenna.
- Increase the separation between the equipment and receiver.
- Connect the equipment into an outlet on a circuit different from that to which the receiver is connected.
- Consult the dealer or an experienced radio/TV technician for help.

CAN ICES-003 (B)/NMB-003 (B)