

INSTALLATION INSTRUCTIONS PHOTOCELL OPTIONS

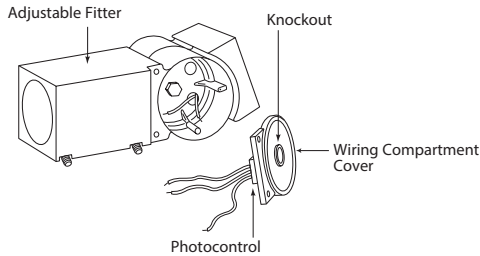
Document:	LPN00674X0001A5_A	Date	7-25-2023
Created By:	TMT		

LOCATING KNOCKOUT

Locating knockout in an adjustable fitter:

- Remove wiring compartment cover from adjustable fitter using Phillips screwdriver.
- Using a hammer and a punch, remove knockout of wiring compartment cover. **See Figure 1.**
- See photocontrol installations. (On backside)
-

FIGURE 1

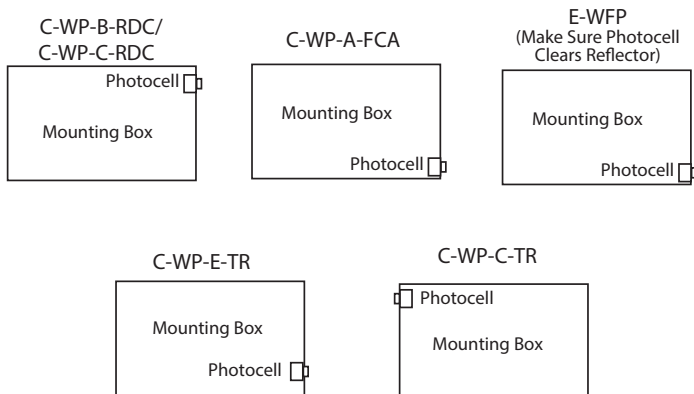


WALLPACKS WITHOUT KNOCKOUTS

- Refer to mounting diagrams, **Figure 2**, for correct fixture series and drill a 11/16" (17mm) hole in location indicated. Make sure the photocell will fit properly before drilling.
- See photocontrol installation

FIGURE 2

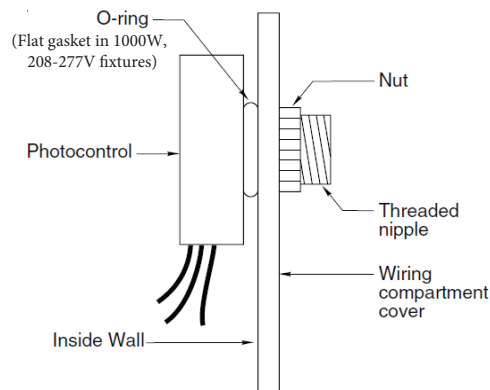
MOUNTING DIAGRAMS



PHOTOCONTROL INSTALLATION

- Remove nut from photocell, leave o-ring. See **Figure 3.**
- Slide photocell through opening.
- Thread nut on to threaded nipple of photocontrol and tighten to ensure waterproof seal.
- Wire photocontrol according to **Figure 4** if wiring phase to neutral or **Figure 5** if wiring phase to phase. In all cases make sure the photocontrol voltage is rated for the supply voltage.
- Reinstall any parts removed during the installation of the photocontrol.

FIGURE 3



WIRING

- Wire according to Single Phase Voltage or Phase to Phase Voltage.

FIGURE 4

Single Phase Voltage (120/277V)"

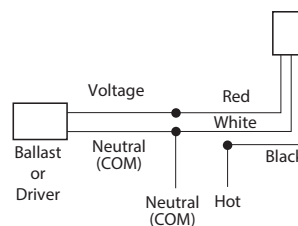


FIGURE 5

Phase to Phase Voltage (208/240V)

