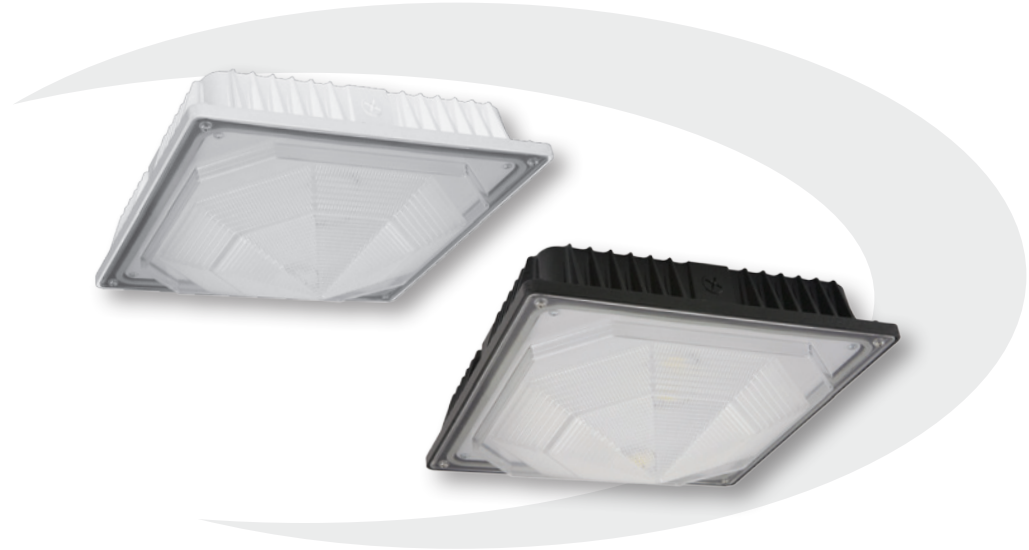


# E-CSA12 Series

LED Square Canopy Light  
Replaces 250W PSMH



## Extremely durable design and an efficacy over 127 lumens per watt.

Illuminate the darkest of areas with our E-CSA12 Series. These fixtures offer a light output of 12,000 lumens - the highest in the canopy lineup - making them the most impressive canopy lights, yet! Purchase one today and achieve a brightness level like never before.

### Performance

- Uses 60% less energy than comparable HID fixtures
- Type VS distribution pattern
- Delivers up to 10% more light than comparable HID fixtures

### Recommended Use

- Security
- Perimeter lighting
- Entryways
- Exterior canopies

### Durable

- Polyester powder-coat finish provides corrosion protection for long-lasting color
- UV-stabilized lens designed to last

### Input Voltage

- Universal (120V through 277V Operation)

### Certifications

**5 YEAR**  
WARRANTY

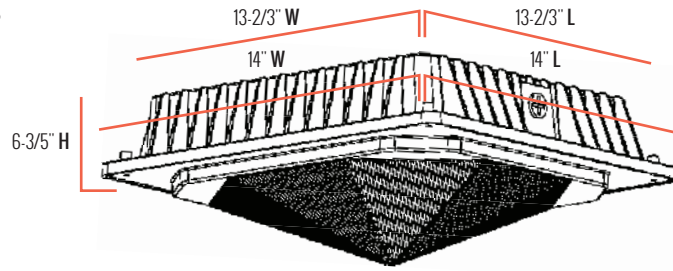
SUITABLE FOR  
**WET**  
LOCATIONS

**UL**  
LISTED

**DLC**  
LISTED

**e-conolight**® | Quality Products, Affordably Priced.

## E-CSA12 Series



### Series Overview

DIMENSIONS	PRODUCT WEIGHT	MOUNTING HEIGHT	SPACING
13-2/3" L x 13-2/3" W x 6-3/5" H 14" L x 14" W (Outer Edge)	15 lbs.	10 to 20 feet	2 to 3 times the mounting height

### Fixture Specifications

<b>HOUSING</b>	Low-copper, die-cast aluminum housing Dark bronze or white polyester powder-coat finish
<b>LENS ASSEMBLY</b>	UV-stabilized acrylic prismatic refractor with self-retaining screws
<b>MOUNTING</b>	3/4" conduit entry on top for pendant mounting 1/2" conduit entries on two sides

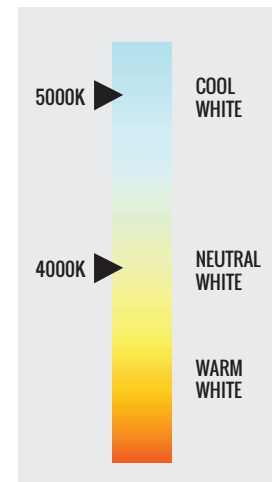
### Electrical Performance

OPERATING RANGE	LIFESPAN <small>L<sub>70</sub> AT 25° C (77° F)</small>	POWER FACTOR	TOTAL HARMONIC DISTORTION	DIMMABLE
-20°C (-4°F) - 40°C (104°F)	Estimated >100,000 Hours	> 0.9	< 20%	No
<b>INPUT VOLTAGE</b>	<b>120V</b>	<b>208V</b>	<b>240V</b>	<b>277V</b>
<b>Current Draw (Amps)</b>	0.79A	0.46A	0.40A	0.34A

### Warranty & Certifications

WARRANTY	UL LISTED	DLC	ENERGY STAR
5-Year Limited	Wet Locations	Yes, Premium	---

### CORRELATED COLOR TEMPERATURE (CCT)



### Output Specifications

SKU	LIGHT OUTPUT	COLOR TEMP <small>(See chart)</small>	POWER CONSUMPTION	COLOR ACCURACY	REPLACES
<b>E-CSA12A-W50Z</b> (Dark Bronze)	12,000 Lumens	Cool White (5000K)	95W	≥ 70 CRI	250W PSMH
<b>E-CSA12A-W40Z</b> (Dark Bronze)	12,000 Lumens	Neutral White (4000K)	95W	≥ 70 CRI	250W PSMH
<b>E-CSA12A-W50W</b> (White)	12,000 Lumens	Cool White (5000K)	95W	≥ 70 CRI	250W PSMH
<b>E-CSA12A-W40W</b> (White)	12,000 Lumens	Neutral White (4000K)	95W	≥ 70 CRI	250W PSMH

Due to continuous product improvement, information in this document is subject to change.

Revision Date: 08/15/19

1501 96<sup>th</sup> Street, Sturtevant, WI 53177 | Phone (888) 243-9445 | Fax (262) 504-5409 | [www.e-conolight.com](http://www.e-conolight.com)

## E-CSA12 Series

### Photometric Diagrams

