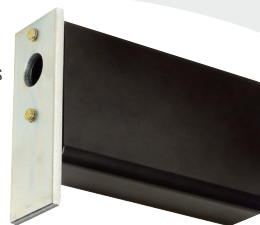


Mounting Options

Flood & Area Lighting Mounting Alternatives

1/2" Wire Access



6" L x 1-3/4" W x 3-1/2" H

SKU	PRODUCT	APPLICATIONS	CONSTRUCTION	HARDWARE
E-ACE	6-inch mounting arm	Use only with mounting E-HS4 Parking / Roadway and E-AL1, E-AL2L & E-APA Series fixtures to straight square poles or wall mounting with E-ACWM3DB.	Extruded aluminum with dark-bronze polyester powder-coat finish	Steel backing plate, threaded rods, and sealing washers included
E-ACESB		Use only with mounting E-SB Series Flood & Area Light fixtures to straight square poles.		



2-1/2" H x 5-1/2" W x 6" D

SKU	PRODUCT	APPLICATIONS	HARDWARE
E-ACU	Adjustable U-bracket Dark Bronze	Use only with mounting E-HS4, E-HR3, E-HR4, E-AL1L & E-APA12. Ideal for wall, ground, roof, or wood pole mounting of fixtures; bolts directly to almost any surface.	Supplied with 30" external cord for ease of wiring.
E-ACUSB		Use only with mounting E-SB Series Flood & Area Light fixtures. Ideal for wall, ground, roof or wood pole mounting of fixtures; bolts directly to almost any surface.	

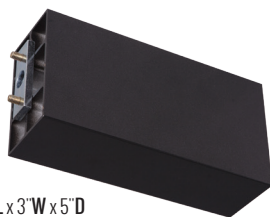


Mounting Options



7" L x 3" W x 3" D
(when in 180° position)

SKU	PRODUCT	APPLICATIONS
E-ACS	Adjustable Slip Fitter	Use only with mounting E-HR3, E-HR4, E-HS4, E-AL, E-SB, E-APA & E-APB Series fixtures to 2' round poles or tenons (2-3/8" O.D.). Allows tilt above horizontal 5° increments from 0° to 180° (for those fixture styles which can be used as an uplight). Also allows lateral rotation. Knockout provided for field installed photocell accessory. Provides enclosed and gasketed internal wiring chamber. Attaches with two set screws.



10" L x 3" W x 5" D

SKU	PRODUCT	APPLICATIONS
E-ACAPBPM	10" Mounting Arm	Use only with E-APB Series for pole mounting. Attaches to any drilled pole.



5-5/6" L x 2-3/4" W x 5-3/5" W (Outer)

5-5/6" L x 2-3/4" W x 5" W (Inner)

SKU	PRODUCT	APPLICATIONS
E-ACUH	Adjustable U-bracket (Use only with E-APA23 / E-AL2L Series)	Ideal for wall, ground, roof, or wood pole mounting of fixtures; bolts directly to almost any surface.
E-ACAPBTM	Adjustable U-bracket (Use only with E-APB Series)	

Due to continuous product improvement, information in this document is subject to change. The UL logo is a registered trademark of UL LLC. The DLC QPL logo and the DLC QPL Premium logo are registered trademarks of Northeast Efficiency Partnerships, Inc.

Revision Date: 12/11/18

1501 96th Street, Sturtevant, WI 53177 | Phone (888) 243-9445 | Fax (262) 504-5409 | www.e-conolight.com